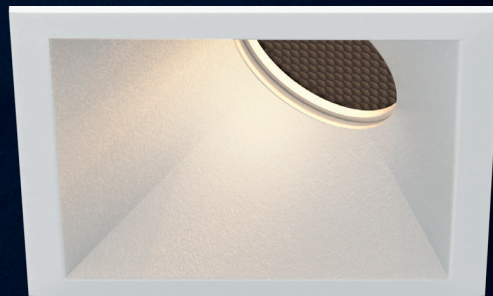
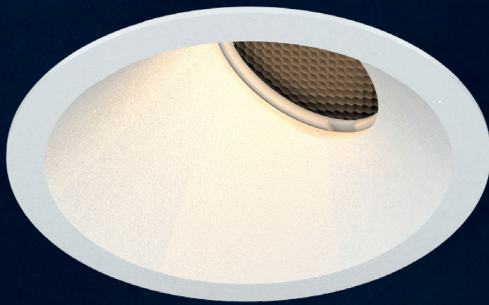


Reduced Glare

VASARI WALLWASH

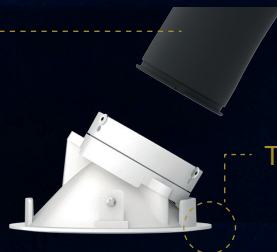
DOWNLIGHT SERIES

A wall washer variant of the Vasari downlight series, designed with a fixed optical tilt angle at 30 degrees to have optimum illumination directed on wall surfaces.



Future proof with upgradeable module

Trim thickness < 2mm



Fixture Features



IP54

Module Colour Temperature Variation



ProART



ProART98



WARM DIM



tuneWHITE

flexiK

flexiK



RGBW



RGBA

Beam Angle



Driver Dimming Variation



(ND)



(PH)



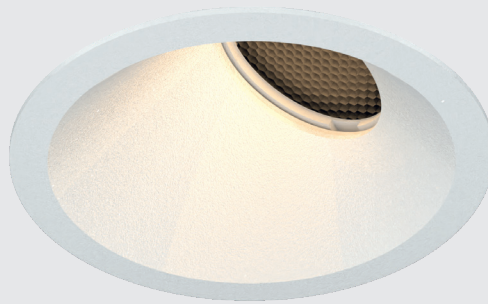
(AN)



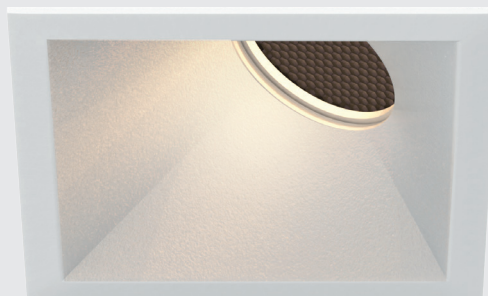
(DA)

VASARI 6 WALLWASH

RECESSED ROUND / SQUARE WALLWASH DOWNLIGHT LUMINAIRE



#ROUND
#WALLWASH
#TRIM



#SQUARE
#WALLWASH
#TRIM

TECHNOLOGY AND FEATURES



Advanced Thermal Protection System



Low Flicker, No Risk (IEEE 1789)



Converging Optical Lens Maximising LOR

AVAILABLE OPTIONS

<p>FIXTURE COLOUR OPTIONS</p>	<p>Trim Colour Options</p> <table border="0"> <tr> <td data-bbox="359 808 491 842">MATT WHITE RAL9003</td> <td data-bbox="544 808 635 869"></td> <td data-bbox="738 808 829 869"></td> </tr> <tr> <td data-bbox="359 887 491 920">MATT BLACK RAL9011</td> <td data-bbox="544 887 635 947"></td> <td data-bbox="738 887 829 947"></td> </tr> </table>	MATT WHITE RAL9003			MATT BLACK RAL9011																															
MATT WHITE RAL9003																																				
MATT BLACK RAL9011																																				
<p>ACCESSORIES</p> <p>***Adapter Ring accessory is necessary when paired with COIN, 35 or 50 series LED module variants.</p>	<p> Adapter Ring</p>																																			
<p>LED MODULE</p> <p><i>*ProART98 option is not available with 500P and 700P LED Modules.</i></p> <p><i>*Drivers for RGBW / RGBA LED modules are sold separately.</i></p>	<table border="0"> <tr> <td data-bbox="359 1144 491 1294"> 700P / 500P / 300P </td> <td data-bbox="499 1171 572 1294"> 100C/P </td> <td data-bbox="1002 1234 1442 1305"> </td> </tr> <tr> <td data-bbox="359 1305 810 1413"> <p>SINGLE CCT</p> <table border="0"> <tr> <td></td> <td></td> <td></td> <td></td> <td></td> <td></td> <td></td> </tr> <tr> <td>2700K</td> <td>3000K</td> <td>3500K</td> <td>4000K</td> <td>5000K</td> <td>ProART</td> <td>ProART98</td> </tr> </table> </td> <td data-bbox="818 1305 994 1413"> <p>700P / 500P / 300P / 100P / 100C</p> </td> <td data-bbox="1002 1305 1442 1413"> <p>✓</p> </td> </tr> <tr> <td data-bbox="359 1413 810 1520"> <p>WARM DIM</p> </td> <td data-bbox="818 1413 994 1520"> <p>100P</p> </td> <td data-bbox="1002 1413 1442 1520"> <p>✓</p> </td> </tr> <tr> <td data-bbox="359 1520 810 1628"> <p>tuneWHITE</p> </td> <td data-bbox="818 1520 994 1628"> <p>300P / 100P</p> </td> <td data-bbox="1002 1520 1442 1628"> <p>✓</p> </td> </tr> <tr> <td data-bbox="359 1628 810 1736"> <p>flexiK</p> </td> <td data-bbox="818 1628 994 1736"></td> <td data-bbox="1002 1628 1442 1736"></td> </tr> <tr> <td data-bbox="359 1736 810 1843"> <p>RGBW</p> </td> <td data-bbox="818 1736 994 1843"> <p>700P / 100P</p> </td> <td data-bbox="1002 1736 1442 1843"> <p>✓</p> </td> </tr> <tr> <td data-bbox="359 1843 810 1951"> <p>RGBA</p> </td> <td data-bbox="818 1843 994 1951"> <p>700P</p> </td> <td data-bbox="1002 1843 1442 1951"> <p>✓</p> </td> </tr> </table>	 700P / 500P / 300P	 100C/P		<p>SINGLE CCT</p> <table border="0"> <tr> <td></td> <td></td> <td></td> <td></td> <td></td> <td></td> <td></td> </tr> <tr> <td>2700K</td> <td>3000K</td> <td>3500K</td> <td>4000K</td> <td>5000K</td> <td>ProART</td> <td>ProART98</td> </tr> </table>								2700K	3000K	3500K	4000K	5000K	ProART	ProART98	<p>700P / 500P / 300P / 100P / 100C</p>	<p>✓</p>	<p>WARM DIM</p>	<p>100P</p>	<p>✓</p>	<p>tuneWHITE</p>	<p>300P / 100P</p>	<p>✓</p>	<p>flexiK</p>			<p>RGBW</p>	<p>700P / 100P</p>	<p>✓</p>	<p>RGBA</p>	<p>700P</p>	<p>✓</p>
 700P / 500P / 300P	 100C/P																																			
<p>SINGLE CCT</p> <table border="0"> <tr> <td></td> <td></td> <td></td> <td></td> <td></td> <td></td> <td></td> </tr> <tr> <td>2700K</td> <td>3000K</td> <td>3500K</td> <td>4000K</td> <td>5000K</td> <td>ProART</td> <td>ProART98</td> </tr> </table>								2700K	3000K	3500K	4000K	5000K	ProART	ProART98	<p>700P / 500P / 300P / 100P / 100C</p>	<p>✓</p>																				
2700K	3000K	3500K	4000K	5000K	ProART	ProART98																														
<p>WARM DIM</p>	<p>100P</p>	<p>✓</p>																																		
<p>tuneWHITE</p>	<p>300P / 100P</p>	<p>✓</p>																																		
<p>flexiK</p>																																				
<p>RGBW</p>	<p>700P / 100P</p>	<p>✓</p>																																		
<p>RGBA</p>	<p>700P</p>	<p>✓</p>																																		
<p>DRIVER DIMMING</p> <p><i>*Phase dimming option is not available with 500P and 700P LED Modules.</i></p>	<table border="0"> <tr> <td> (ND)</td> <td> (PH)</td> <td> (AN)</td> <td> (DA)</td> </tr> </table>	(ND)	(PH)	(AN)	(DA)																															
(ND)	(PH)	(AN)	(DA)																																	

VASARI 6 WALLWASH

#ROUND
#SQUARE
#TRIM

SPECIFICATIONS

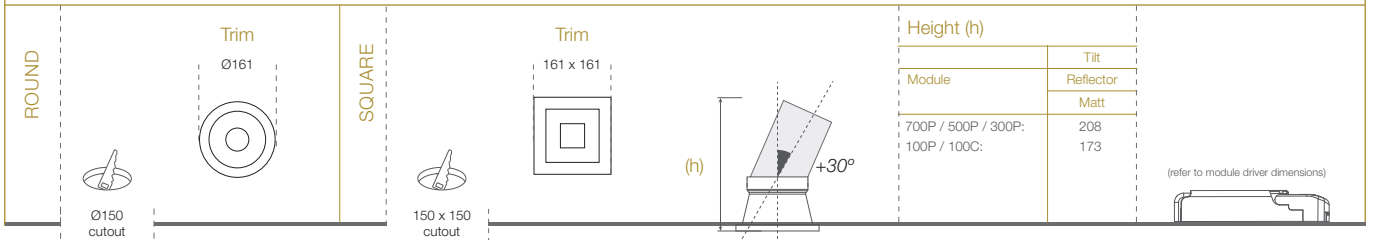
FITTURE	
Family Type	Vasari series
Fixture Colours	Matt white, matt black
Fixture Materials	Aluminium
Ingress Protection	IP54
LED MODULE & DRIVER	
Compatible LED Modules	COIN, 35, 50 and 100 series LED modules
Lifetime	Up to 50,000 hours L80 lamp life with LM80 tested LED chip packages
Beam Angles	Wallwash with 60° beam angle at 30° optical tilt, fitted with linear spread lens
Colour Temperatures	2700K, 3000K, 3500K, 4000K, 5000K, Warm Dim, tuneWHITE, flexiK
CRI	High Efficiency (CRI~85), ProART (CRI~95), ProART98 (CRI~98)
Driver (Dimming)	Non-dim, phase (leading & trailing edge), 0-10V, DALI

100 Pro /
100 Classic

700 Pro / 500 Pro /
300 Pro



DIMENSIONS (MM)



VASARI 6 WALLWASH

PHOTOMETRICS

700 PRO



		Meter	E (30°)	E _{max} (lx)	ELR LED Module			700P	500P	300P	
					60°			LED Power	66W	54W	36W
					System Power			76W	62W	43W	
					Luminous Flux (lm)	Type	Beam Angle	CRI			
						Single CCT (3000K)	60°	High Efficiency Ra-85	5840	4745	3139
								ProART Ra-95	4964	4033	2668
					ProART98 Ra-98					2197	

Correction Factor: 700P - f = 1.00
500P - f = 0.81
300P - f = 0.54

Data are based on 3000K (ProART CRI-95). Nominal data of 2700K and 3500K are shared with 3000K. Higher CCT of 4000K and 5000K will have a nominal data value of 5% higher than published. (f = 1.05)
High Efficiency CRI-85 will have a nominal data value of 15% higher than published. (f = 1.17)
ProART98 CRI-98 will have a nominal data value of 8% lower than published. (f = 0.82)

Nominal CRI-85, equals to Ra>80-87, R9>0
Nominal CRI-95, equals to Ra>90-97, R9>50
Nominal CRI-98, equals to Ra>97-99, R9>93

700 PRO RGBW



		Meter	E (30°)	E _{max} (lx)	ELR LED Module			700P	
					60°			LED Power	64W
					System Power			74W	
					Luminous Flux (lm)	Type	Beam Angle	CRI	
						RGBW	60°	N/A	2139
						RGBA	60°	N/A	1763

Data are based on maximum output of all 4 RGBW channels.

300 PRO tuneWHITE/flexiK



		Meter	E (30°)	E _{max} (lx)	ELR LED Module			300P	
					60°			LED Power	36W
					System Power			43W	
					Luminous Flux (lm)	Type	Beam Angle	CRI	
						tuneWHITE/flexiK (4000K / 6500K)	60°	ProART Ra-95	2190

Data are based on maximum output at highest CCT (4000K / 6500K).
2700K will have a nominal data value of 10% lower than published. (f = 0.90)
1800K will have a nominal data value of 30% lower than published. (f = 0.70)

Nominal CRI-95, equals to Ra>90-97, R9>50

VASARI 6 WALLWASH

PHOTOMETRICS

100 PRO



Meter	Beam Angle	E _{max} (lx)	ELR LED Module			
			Type	Beam Angle	CRI	
60°			LED Power		100P	100C
1			E (30°)		23W	17W
2			E (30°)		System Power	
3			E (30°)		28W	28W
4			E (30°)		Luminous Flux (lm)	
5			E (30°)		2190	1504
			Single CCT (3000K)		1862	1278
			60°		1533	1053
			High Efficiency Ra-85			
			ProART Ra-95			
			ProART98 Ra-98			

Correction Factor: 100P - f = 1.00
100C - f = 0.69

Data are based on 3000K (ProART CRI-95). Nominal data of 2700K and 3500K are shared with 3000K. Higher CCT of 4000K and 5000K will have a nominal data value of 5% higher than published. (f = 1.05)
High Efficiency CRI-85 will have a nominal data value of 15% higher than published. (f = 1.17)
ProART98 CRI-98 will have a nominal data value of 8% lower than published. (f = 0.82)

Nominal CRI-85, equals to Ra>80-87, R9>0
Nominal CRI-95, equals to Ra>90-97, R9>50
Nominal CRI-98, equals to Ra>97-99, R9>93

100 PRO WARM DIM



Meter	Beam Angle	E _{max} (lx)	ELR LED Module			
			Type	Beam Angle	CRI	
60°			LED Power		100P	
1			E (30°)		23W	
2			E (30°)		System Power	
3			E (30°)		28W	
4			E (30°)		Luminous Flux (lm)	
5			E (30°)		1606	
			Warm Dim (3100K)		60°	
			ProART Ra-95			

Data are based on maximum output at 3100K.
Nominal CRI-95, equals to Ra>90-97, R9>50

100 PRO tuneWHITE/flexiK



Meter	Beam Angle	E _{max} (lx)	ELR LED Module			
			Type	Beam Angle	CRI	
60°			LED Power		100P	
1			E (30°)		23W	
2			E (30°)		System Power	
3			E (30°)		28W	
4			E (30°)		Luminous Flux (lm)	
5			E (30°)		1387	
			tuneWHITE/flexiK (4000K / 6500K)		60°	
			ProART Ra-95			

Data are based on maximum output at highest CCT (4000K / 6500K).
2700K will have a nominal data value of 10% lower than published. (f = 0.90)
1800K will have a nominal data value of 30% lower than published. (f = 0.70)

Nominal CRI-95, equals to Ra>90-97, R9>50

100 PRO RGBW

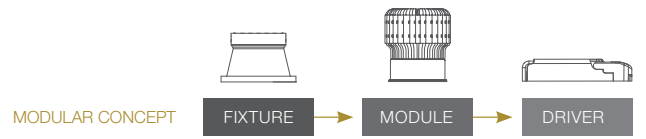


Meter	Beam Angle	E _{max} (lx)	ELR LED Module			
			Type	Beam Angle	CRI	
60°			LED Power		100P	
1			E (30°)		22W	
2			E (30°)		System Power	
3			E (30°)		26W	
4			E (30°)		Luminous Flux (lm)	
5			E (30°)		741	
			RGBW		60°	
			N/A			

Data are based on maximum output of all 4 RGBW channels.

Reduced Glare

VASARI 6 WALLWASH



ORDERING MATRIX CHART

Fixture												
Type	Trim Options		Shape		Angle	Colour		Accessories				
VASARI-6	T	Trim	RD	Round	WW	Wallwash	WH	Matt White	N	None		
				SQ			Square	MB	Matt Black	ADT	Adapter Ring***	

***Adapter Ring accessory is necessary when paired with 100 series LED module variants.

Single CCT LED Module					Driver	
LED Power	Beam Angle		Colour Temp	CRI	Dimming	
ELR700P	66W	15° 15°	27 2700K	HE Ra~85	ND	Non-Dim
ELR500P	54W	35° 35°	30 3000K	PA ProART	PH	Phase*
ELR300P	36W	60° 60°	35 3500K	PP ProART98*	AN	0-10V
			40 4000K		DA	DALI
			50 5000K			
ELR100P	23W	12° 12°	27 2700K	HE Ra~85	ND	Non-Dim
ELR100C	17W	20° 20°	30 3000K	PA ProART	PH	Phase
		35° 35°	35 3500K	PP ProART98	AN	0-10V
		60° 60°	40 4000K		DA	DALI
			50 5000K			

*ProART98 and phase dimming options are not available with ELR500P and ELR700P LED Modules.

Warm Dim LED Module					Driver	
LED Power	Beam Angle		Colour Temp	CRI	Dimming	
ELR100P	23W	12° 12°	WD Warm Dim	PA ProART	PH	Phase
		20° 20°			AN	0-10V
		35° 35°			DA	DALI
		60° 60°				

tuneWHITE LED Module					Driver	
LED Power	Beam Angle		Colour Temp	CRI	Dimming	
ELR300P	36W	15° 15°	TW1831 tuneWHITE 1800K-3100K	PA ProART	DA	DALI
		35° 35°	TW1840 tuneWHITE 1800K-4000K			
		60° 60°	TW2765 tuneWHITE 2700K-6500K			
ELR100P	23W	20° 20°	TW1831 tuneWHITE 1800K-3100K	PA ProART	DA	DALI
		35° 35°	TW1840 tuneWHITE 1800K-4000K			
		60° 60°	TW2765 tuneWHITE 2700K-6500K			

flexiK LED Module					Driver	
LED Power	Beam Angle		Colour Temp	CRI	Dimming	
ELR300P	36W	15° 15°	FK## flexiK	PA ProART	PH	Phase
		35° 35°			AN	0-10V
		60° 60°			DA	DALI
ELR100P	23W	20° 20°	FK## flexiK	PA ProART	PH	Phase
		35° 35°			AN	0-10V
		60° 60°			DA	DALI

denotes the first two digits of preferred CCT ranging from 1800K to 6500K by increment of 100K.

RGBW / RGBA LED Module				
LED Power	Beam Angle		Colour Temp	
ELR700P	64W	35° 35°	RGBW	Red, Green, Blue, White
		60° 60°	RGBA	Red, Green, Blue, PC Amber
ELR100P	22W	35° 35°	RGBW	Red, Green, Blue, White
		60° 60°		

*Drivers for RGBW / RGBA LED modules are sold separately.

example: VASARI-6.T.RD.WW.WH.N.ELR300P.60.27.PA.DA

*Custom RAL colour options available.